

**CERTIFIED LAND CORNER RECORDATION**

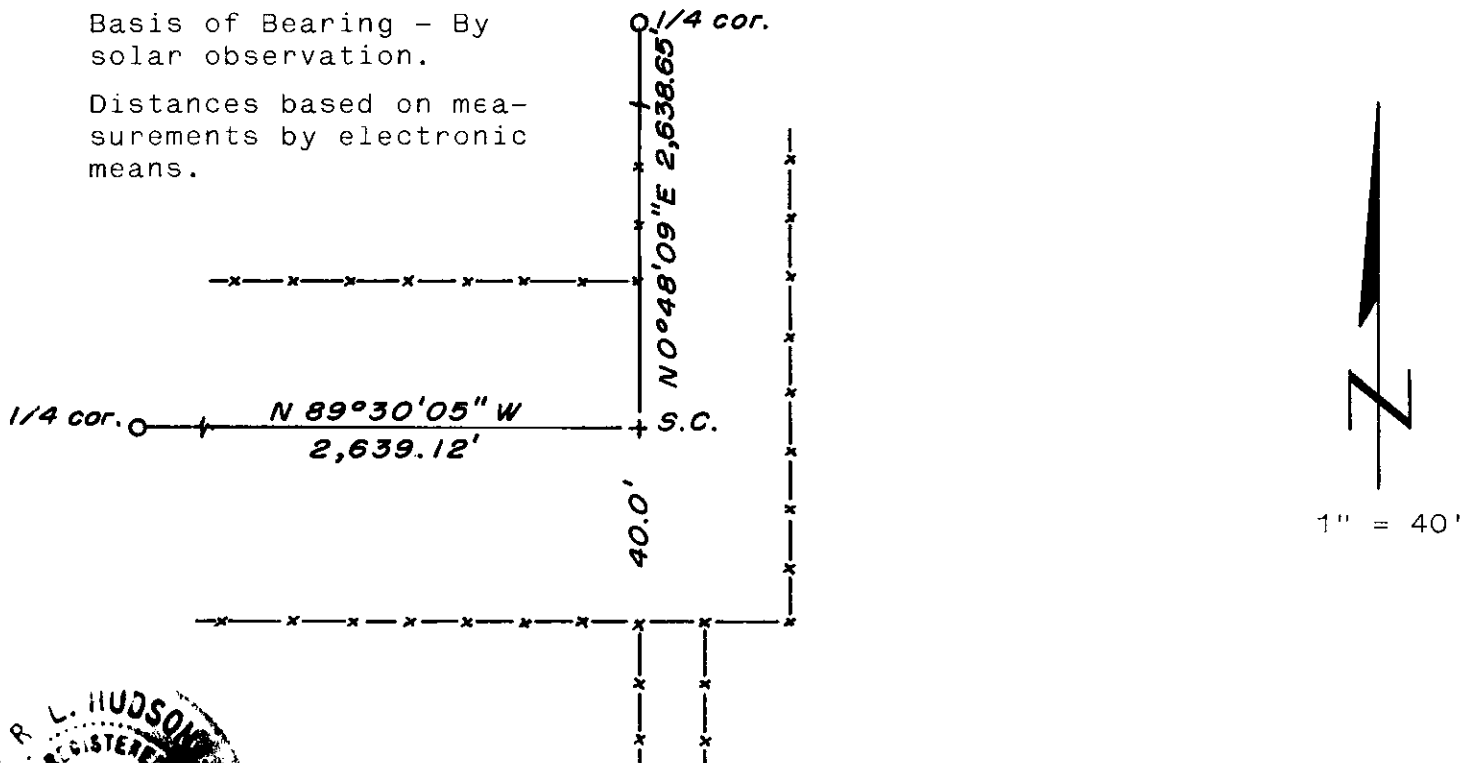
DESCRIPTION OF CORNER EVIDENCE FOUND, AND ORIGINAL RECORD (If known)

LOCATION No evidence of corner monument found.  
 S.2 S.1 Corner position re-established from fences, as shown.  
 S.11 S 12 G.L.O. record - 1871 contract survey by Edwin James -  
 T.13N., R.64W. Sand Stone 24 x 12 x 5 for corner to Sections 1, 2, 11  
 6th P.M. & 12.

DESCRIPTION OF MONUMENT AND ACCESSORIES ESTABLISHED  
 TO PERPETUATE THE ORIGINAL LOCATION OF THIS CORNER:

At the corner: No monument set  
 Accessories: None

SKETCH, WITH COURSE AND DISTANCE TO ADJACENT CORNER IF DETERMINED IN THIS SURVEY.  
 (May Sketch or Paste Reproduction on Reverse Side.)



R. L. Hudson certify that I have carefully performed ~~or reviewed~~ the work done on the diagrammed corner as reported on this recordation form and approve the same.

R. L. Hudson Wyoming I.S. No. 519  
 Signature of Surveyor Registration No.

STATE OF WYOMING,  
 Office of Clerk and Recorder,  
 County of Tarasie

This "corner record" was filed for record on the 18 day of July, 1977, was noted on the cross-index plat and is assigned page No. \_\_\_\_\_, in book No. \_\_\_\_\_.

John C Whitehead  
 County Official

Cross Index No.	T. _____	R. _____	Mer.
	<u>E 21</u>	<u>13</u>	<u>64</u>
	_____	_____	_____
	_____	_____	_____
	_____	_____	_____
	_____	_____	_____
	_____	_____	_____

446775

Photographed

Indexed

Filed

Assessor